

## Run as administrator – Windows platform

### 1. Introduction

This document applies to running applications built using the ARS Technologies API set on Windows platform .

Microsoft operating systems have ever increasingly strict security settings.

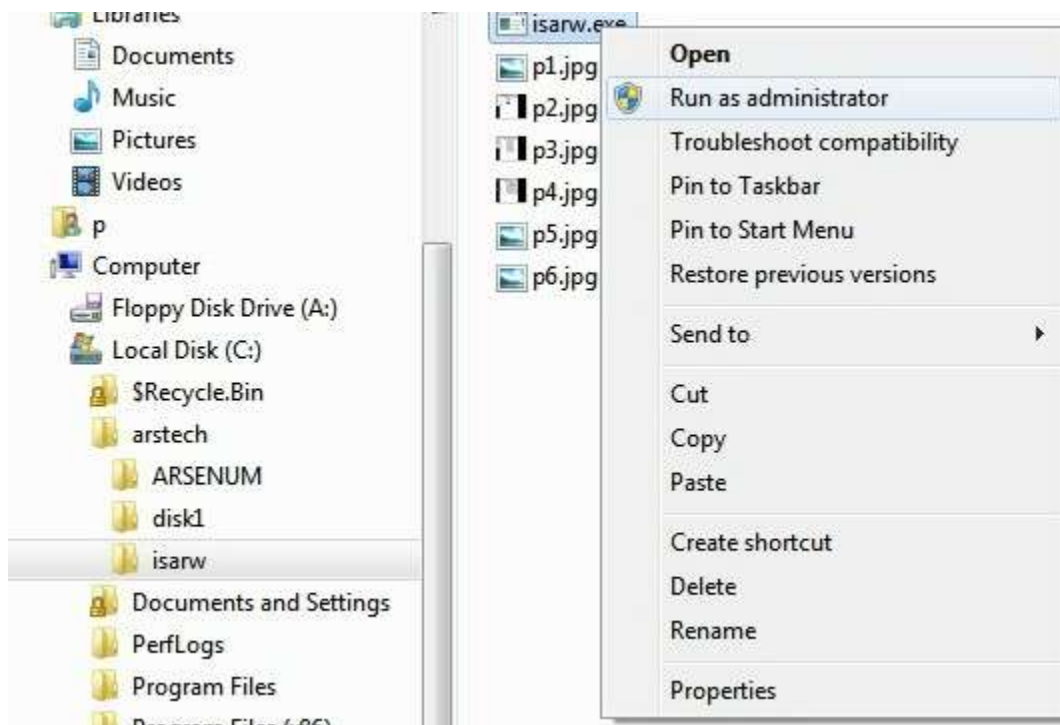
Current general operating system releases – like Windows 7, and server operating system – like Windows Server 2008, as well older operating system releases, have restriction when running applications.

This document:

- uses an application – 'isarw.exe' which was built using the ARS Technologies API set under Microsoft's Developer Studio 2005 and later / .NET 2.0 and later
- provides a guide on how to adjust the properties of 'isarw.exe' – using the 'File explorer'

### 2. Windows 7 environment

To run one time only – in 'File explorer' select 'isarw.exe', make right mouse click, select and click on 'Run as administrator' .



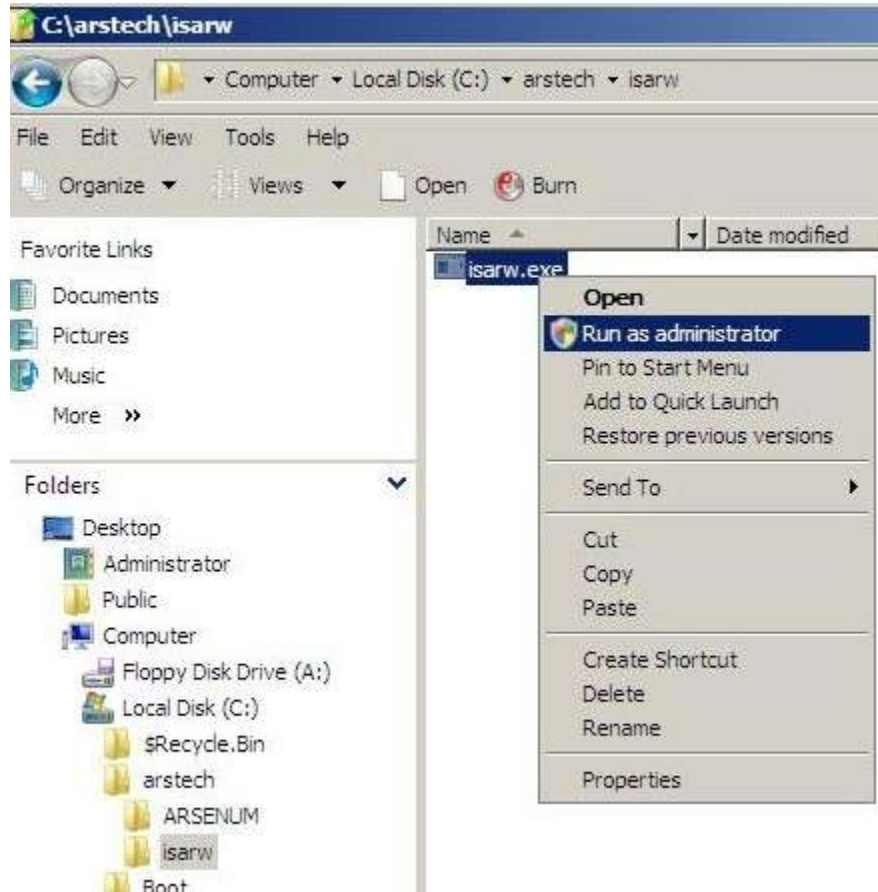




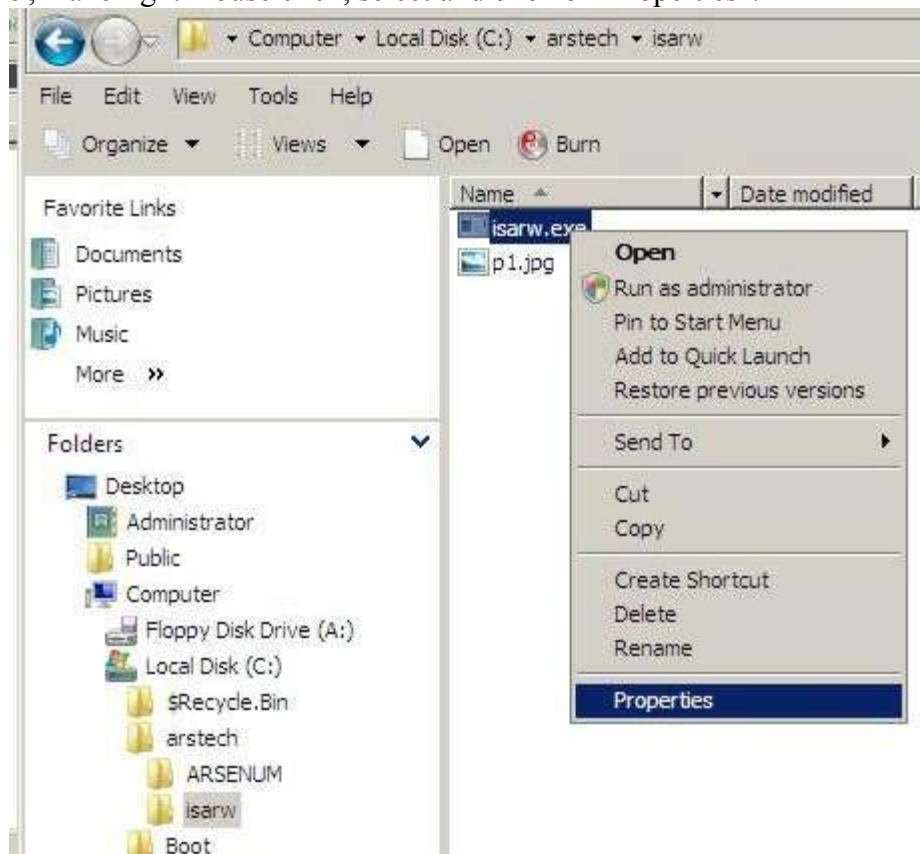


### 3. Windows Server 2008 environment

To run one time only – in 'File explorer' select 'isarw.exe', make right mouse click, select and click on 'Run as administrator' .



In order to avoid repeating the above every time, you need to do – in 'File explorer' select 'isarw.exe', make right mouse click, select and click on 'Properties' .



>>>>>>>>>>

Select 'compatibility' tab, under 'Privilege level' check 'Run this program as admin'.

